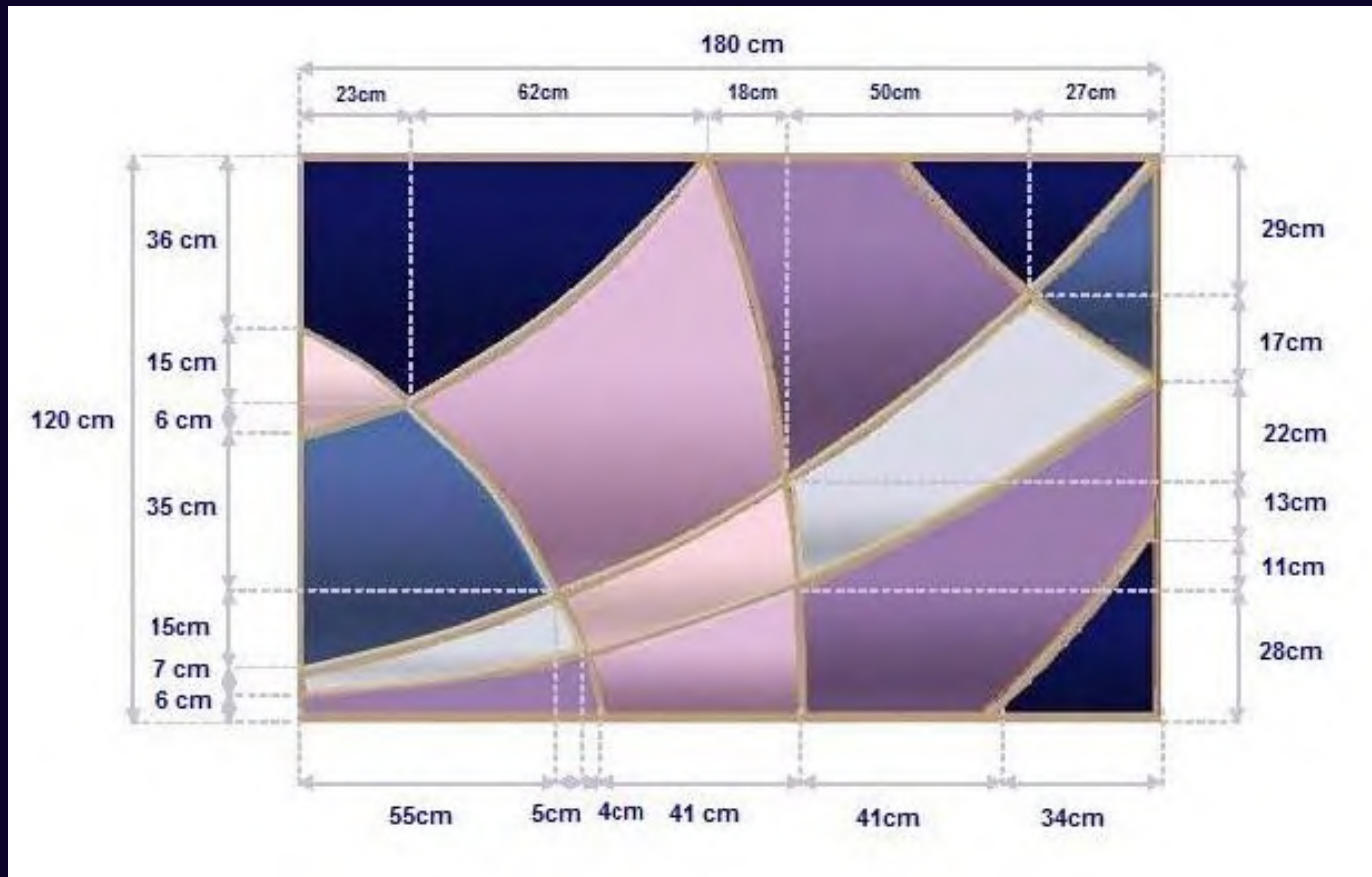




*“At the violet hour, the evening hour that strives / Homeward, and brings the sailor home from sea” (T.S. Eliot)*

*Inspired by an ideal return to the communion between nature and man*



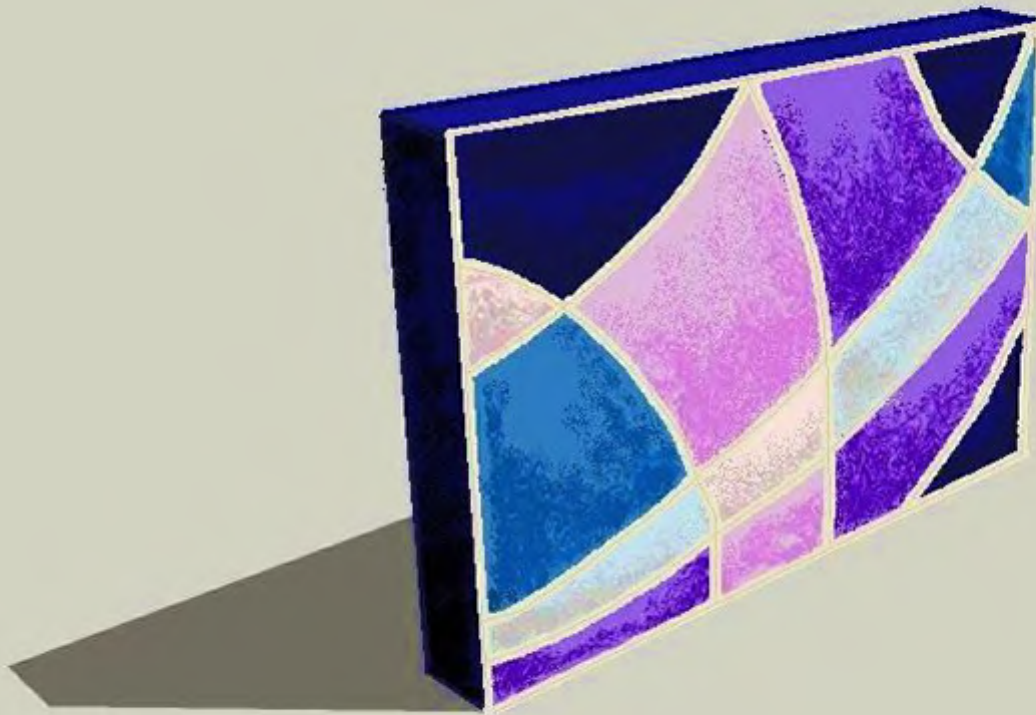
Ivory braid trim 2,5 cm

SAVOIR BEDS – ORGANIC 2012

- THE VIOLET HOUR – Isometric representation

Width 180 cm Height 120 cm

Depth 18 cm



# SAVOIR BEDS – ORGANIC 2012

## - THE VIOLET HOUR – Specification

### THE SILK ROUTE – 100% INDIAN SILK DUPION

HA113 SHELL PINK



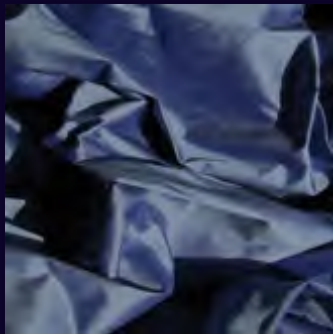
HA18 LILAC



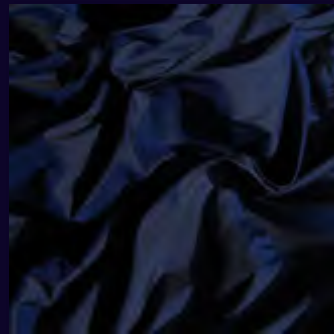
BS63 SHOT LILAC



HA2 SMOKE BLUE



JB590 LUPIN



HA6 BRIGHT NAVY

Rayon braid trim with twisted cord, col. IVORY



Headboard consists of one panel. Sections are created using dupion silk in 6 different colourways (fabric is cut and stitched in different shapes). Stitching between sections is masked by braid trim above, which is also placed as a frame all around the front face of the headboard (see Front Elevation).