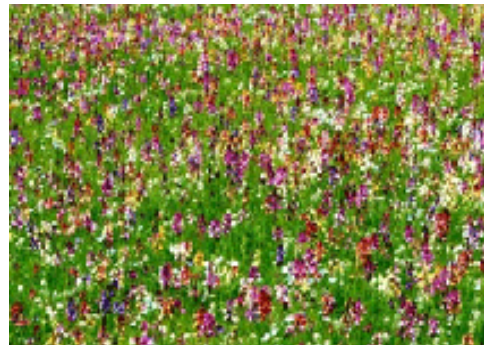




Organic

Organic shapes are typically representative of shapes found in nature, uneven, pleasing and comforting.

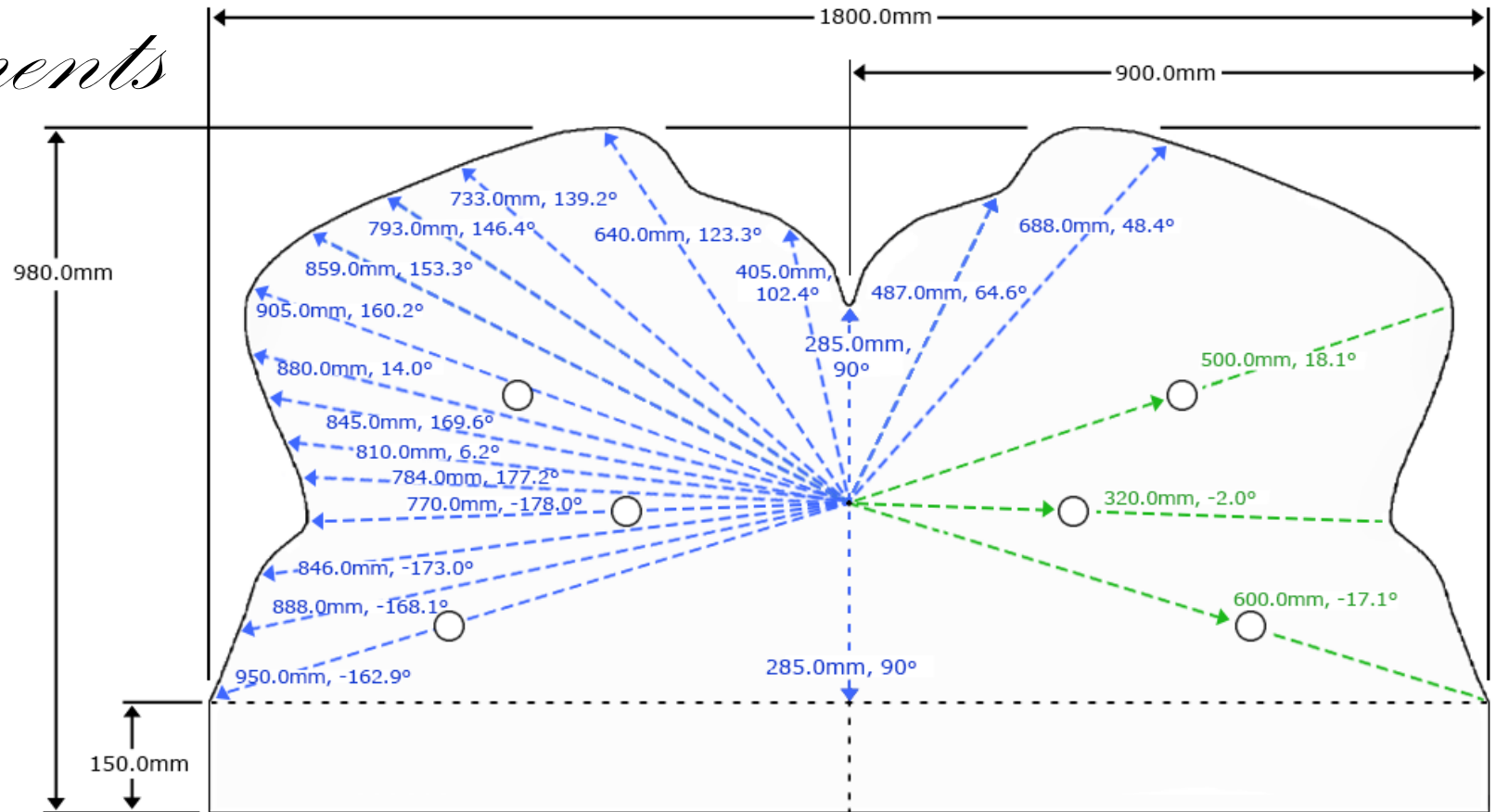
One needs to look no further than the Art Nouveau period, inspired by natural forms and structures, which saw the birth of the Savoir No2 Bed at the Savoy Hotel in 1905.



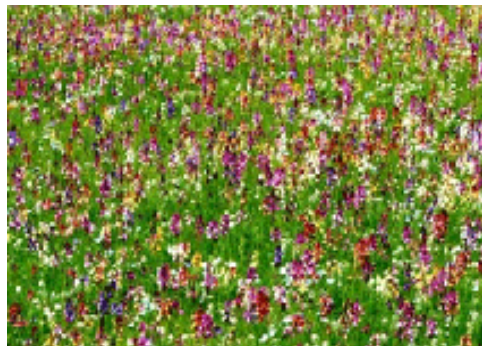
SAVOIR BEDS

SINCE 1905

Measurements



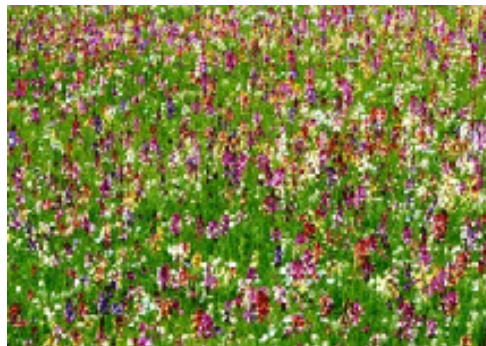
Overall measurements 1800.0mm x 980.0mm (above mattress). The radii of the wings are shown in blue, whilst the positioning of the buttons are shown in green (from the center point to the center of each button).



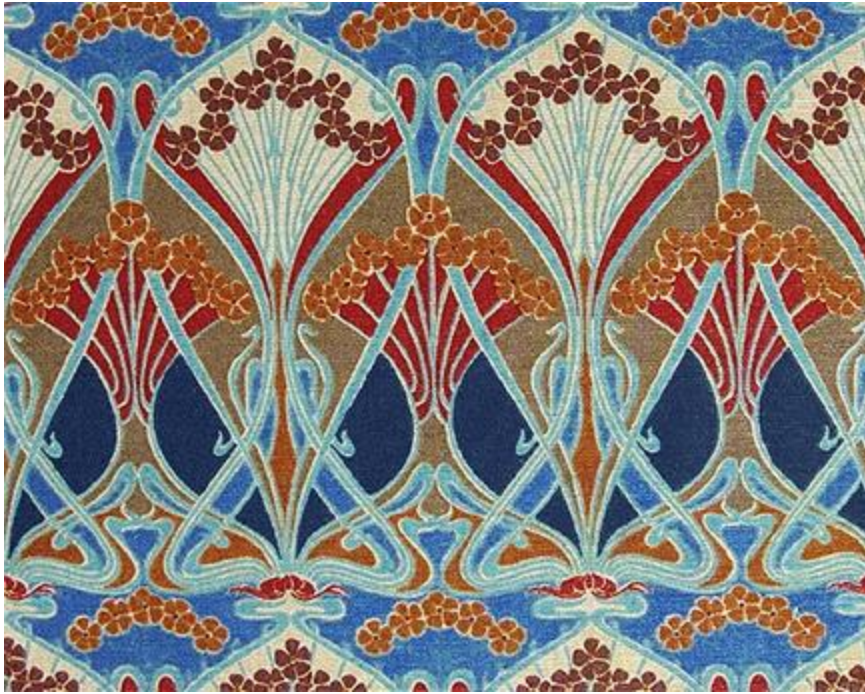


Isometric View

Organic form reminiscent of the butterfly wings, offered with large tufted buttons in the same fabric.



SAVOIR BEDS
SINCE 1905



Headboard Materials

Fabric: Historic Style LIN 4022-01

54" wide linen union (53% linen; 35% cotton; 12% nylon)

Eggplant, burgundy, brown, olive, green-blue, blue, navy, and taupe

Taylor's domed button shell:

50 Ligne (32.0mm) covered in the same fabric

Originally designed as a wallpaper border c.1902 by French designer R.Beaucclair, this 'lanthe' motif was subsequently designed as a fabric in 1967 by Liberty of London. This design has all the hallmarks of the Art Nouveau, and was chosen for its floral patterns and sinuous curling elements as well as its echo to Gaudi's Casa Batllo window forms.



SAVOIR BEDS

SINCE 1905