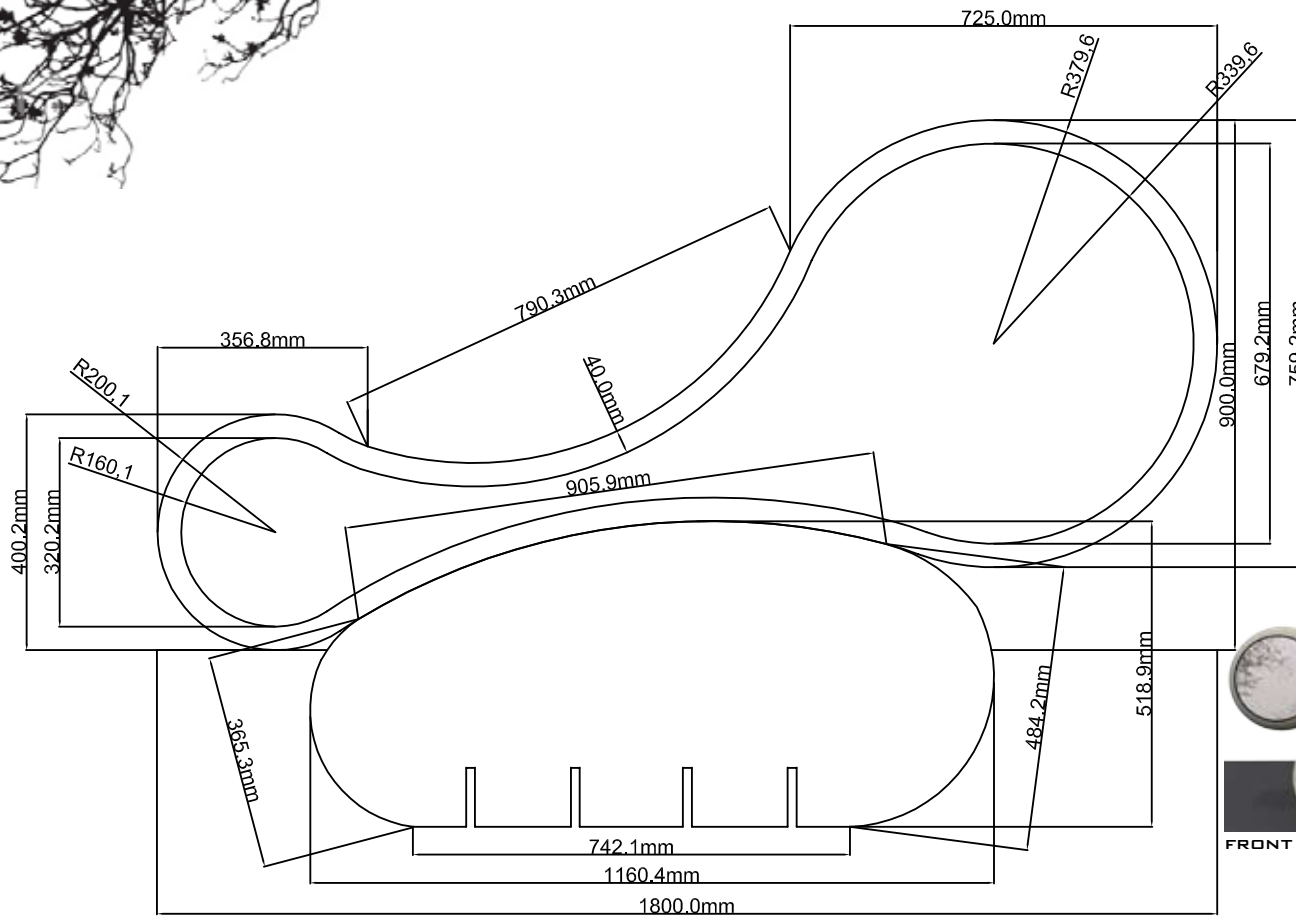




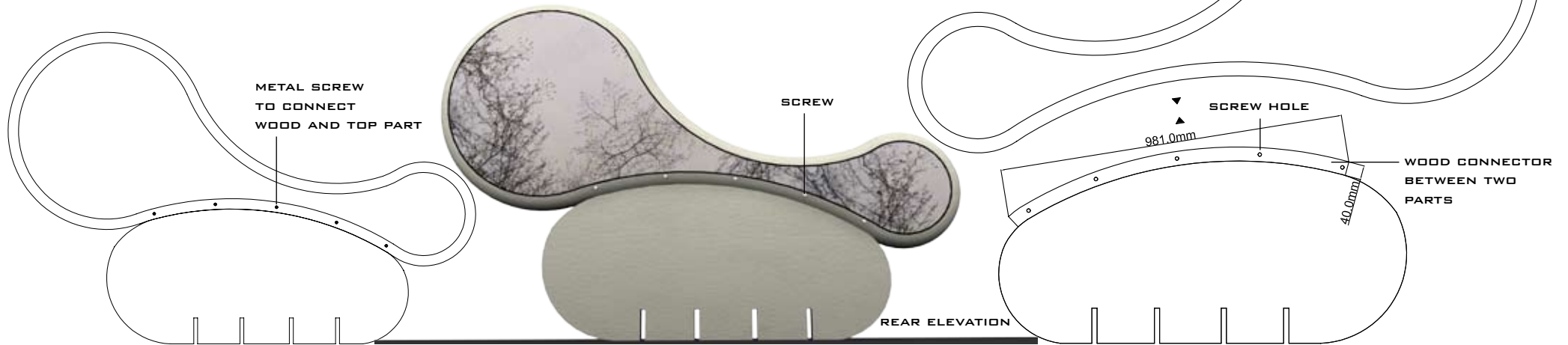
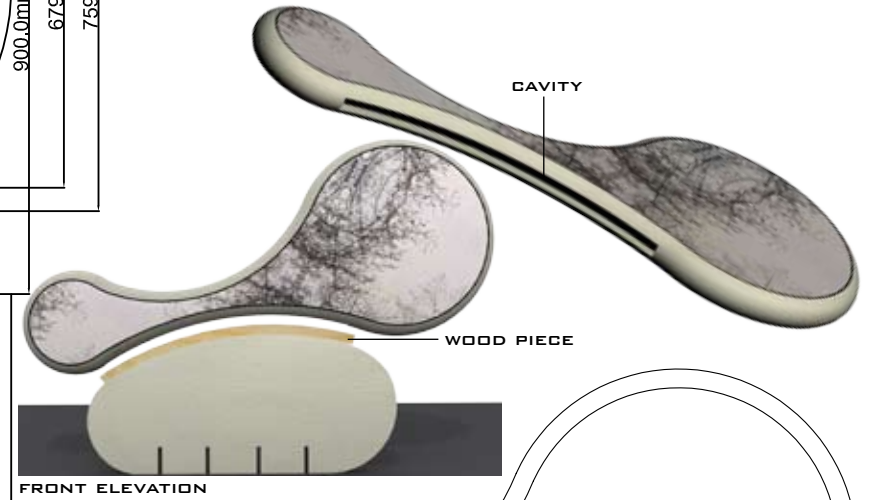
THE INSPIRATION THAT GIVES AN ORGANIC SHAPE TO THE HEADBOARD DESIGN IS WATER DROPS. TREE BRANCHES ARE INFLUENCED WHILE CHOOSING THE FABRIC OF THE HEADBOARD. THESE TWO COMPLEMENTARY ELEMENTS ARE MERGED IN THIS DESIGN AND ENHANCED THE LOOK OF THE HEADBOARD WHICH IS NATURAL , ORGANIC AND CONTEMPORARY.



SAVOIR BEDS - ORGANIC HEADBOARD DESIGN - MEASUREMENTS



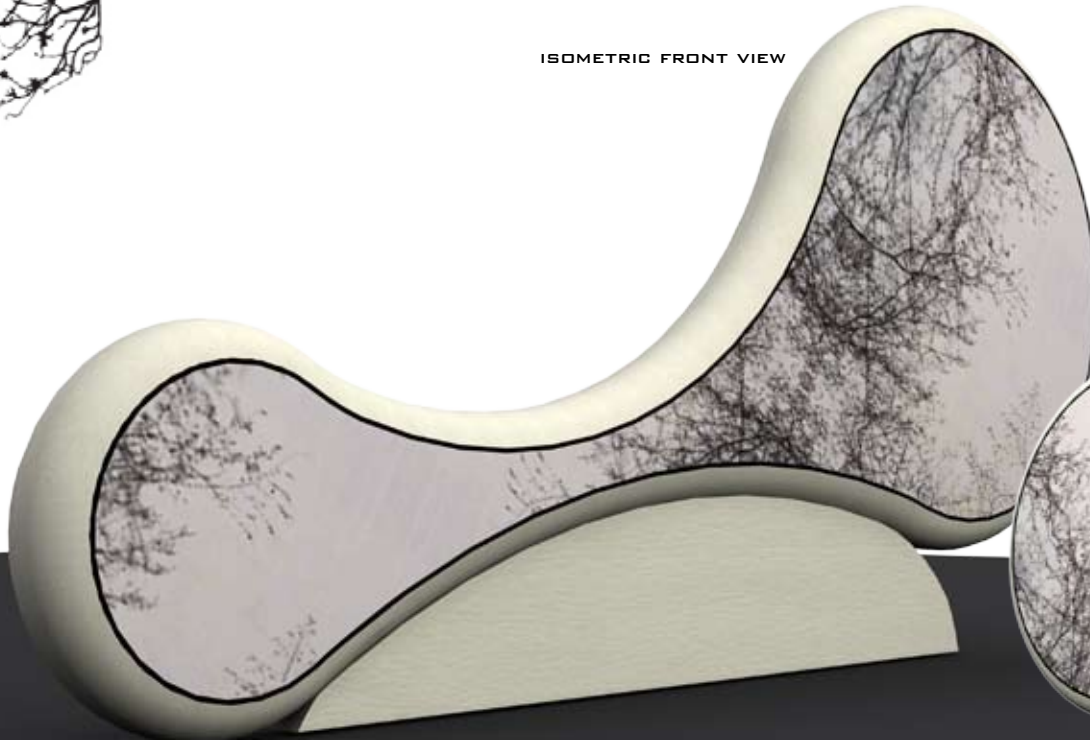
HEADBOARD CONSISTS OF TWO PARTS. THE TOP AND BOTTOM PARTS ARE CONNECTED TO EACH OTHER WITH A WOOD PIECE WHICH IS GLUED TO THE BOTTOM PART. TOP PART HAS A CAVITY INSIDE TO PLACE THE WOOD PIECE. TOP PART AND WOOD ARE ALSO HELD TOGETHER WITH SCREWS FROM THE BEHIND OF THE HEADBOARD. OVERALL MEASUREMENTS: 1800MMX900MM



SAVOIR BEDS - ORGANIC HEADBOARD DESIGN - 3D VISUALIZATIONS - ABOVE MATTRESS LEVEL



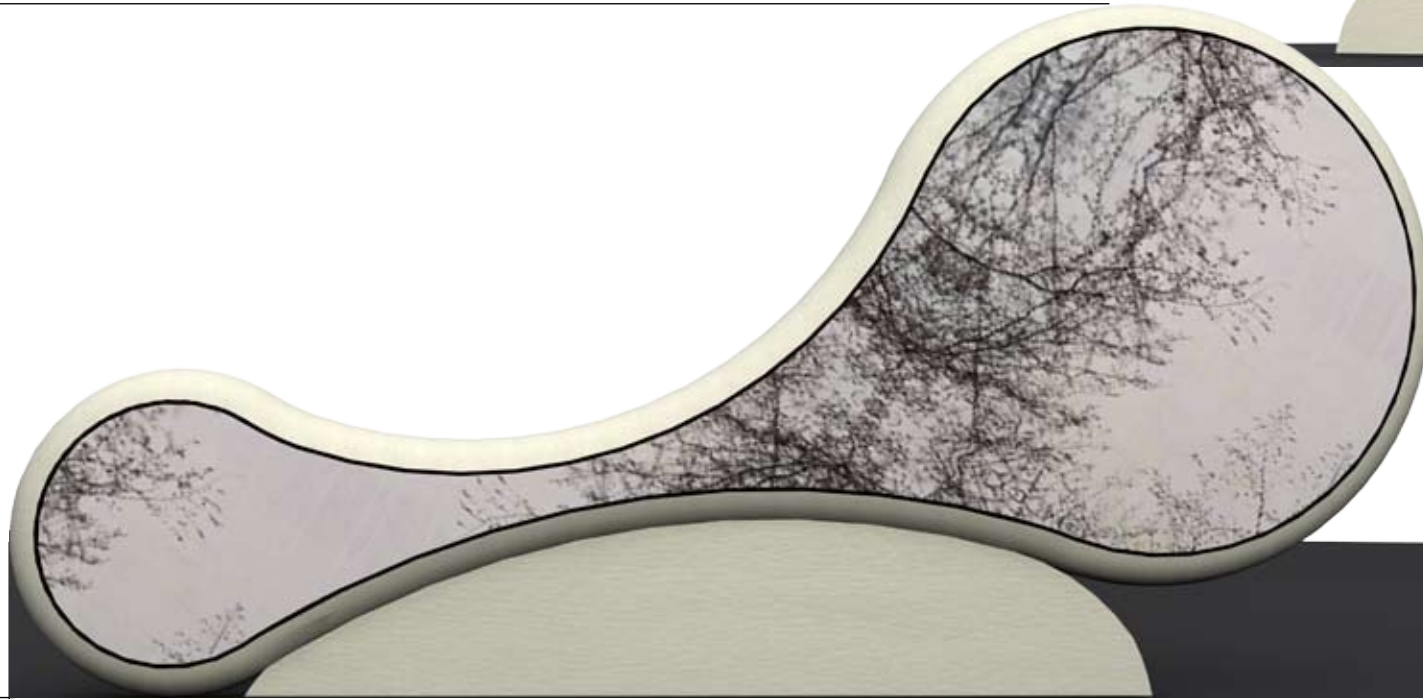
ISOMETRIC FRONT VIEW



ISOMETRIC REAR VIEW



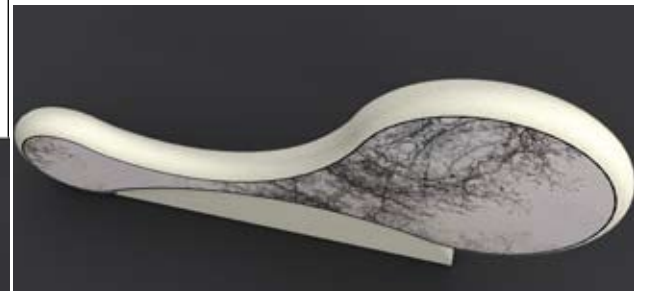
900MM



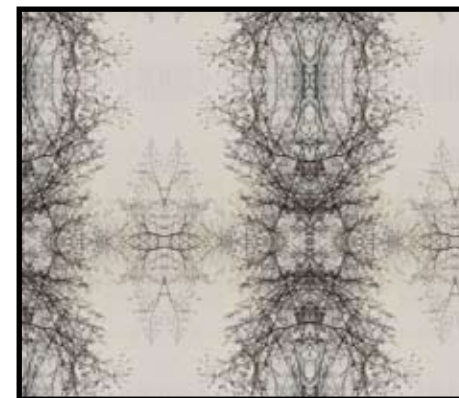
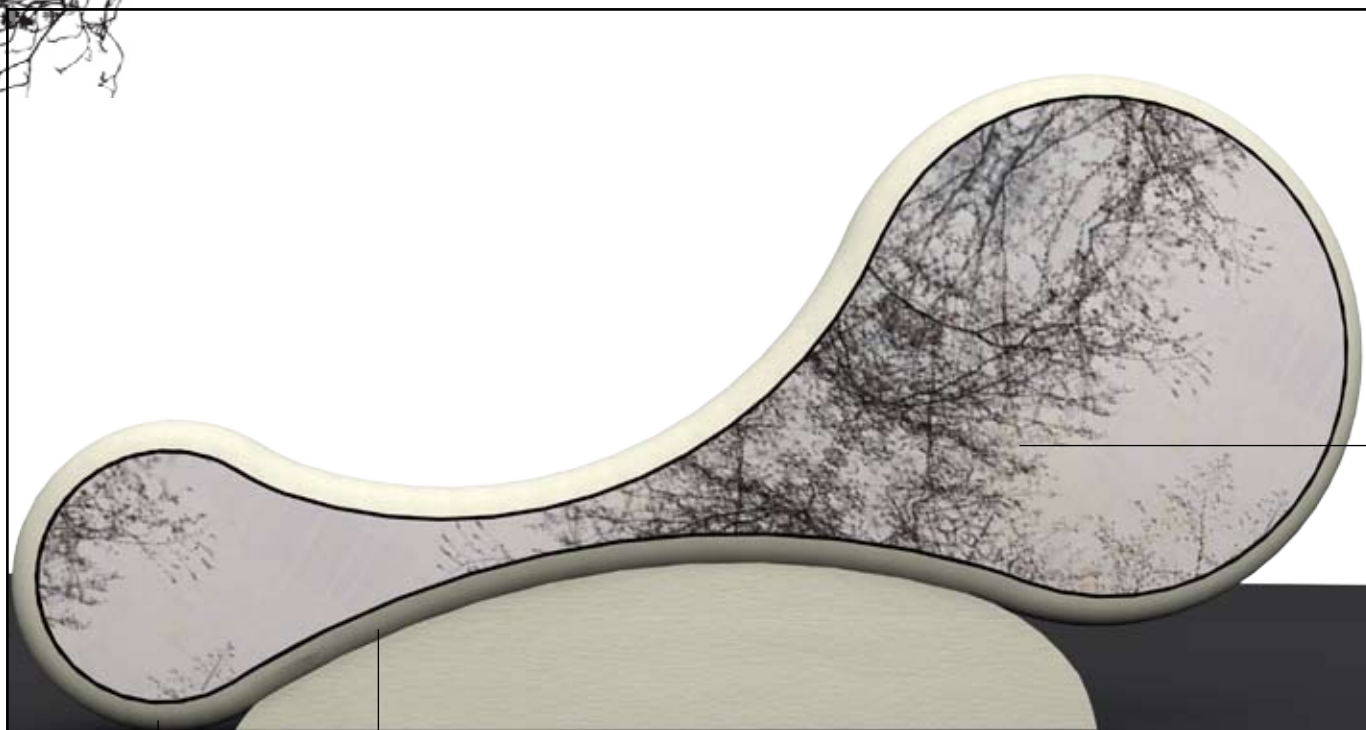
1800MM

FRONT VIEW

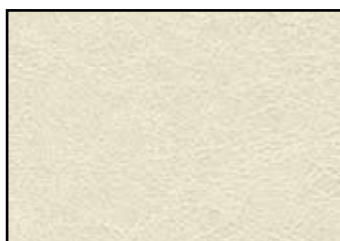
ISOMETRIC VIEW



SAVOIR BEDS - ORGANIC HEADBOARD DESIGN - HEADBOARD MATERIALS



FABRIC 1:
BRANCHABSTRACT BY MBSMITH
ORGANIC COTTON KNIT



FABRIC 2:
WHISTLER LEATHER
MNR228 MINERVE IVORY

TREE BRANCH PATTERN FABRIC HAS BEEN CHOSEN TO GIVE A NATURAL AND UNIQUE LOOK TO THE HEADBOARD. LEATHER FABRIC ADDS MODERNITY AND SOFTNESS BY DEFINING THE SHAPE OF THE DESIGN.