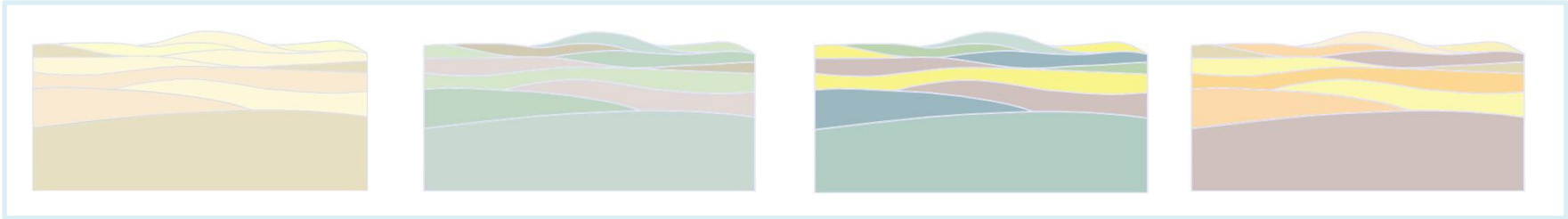
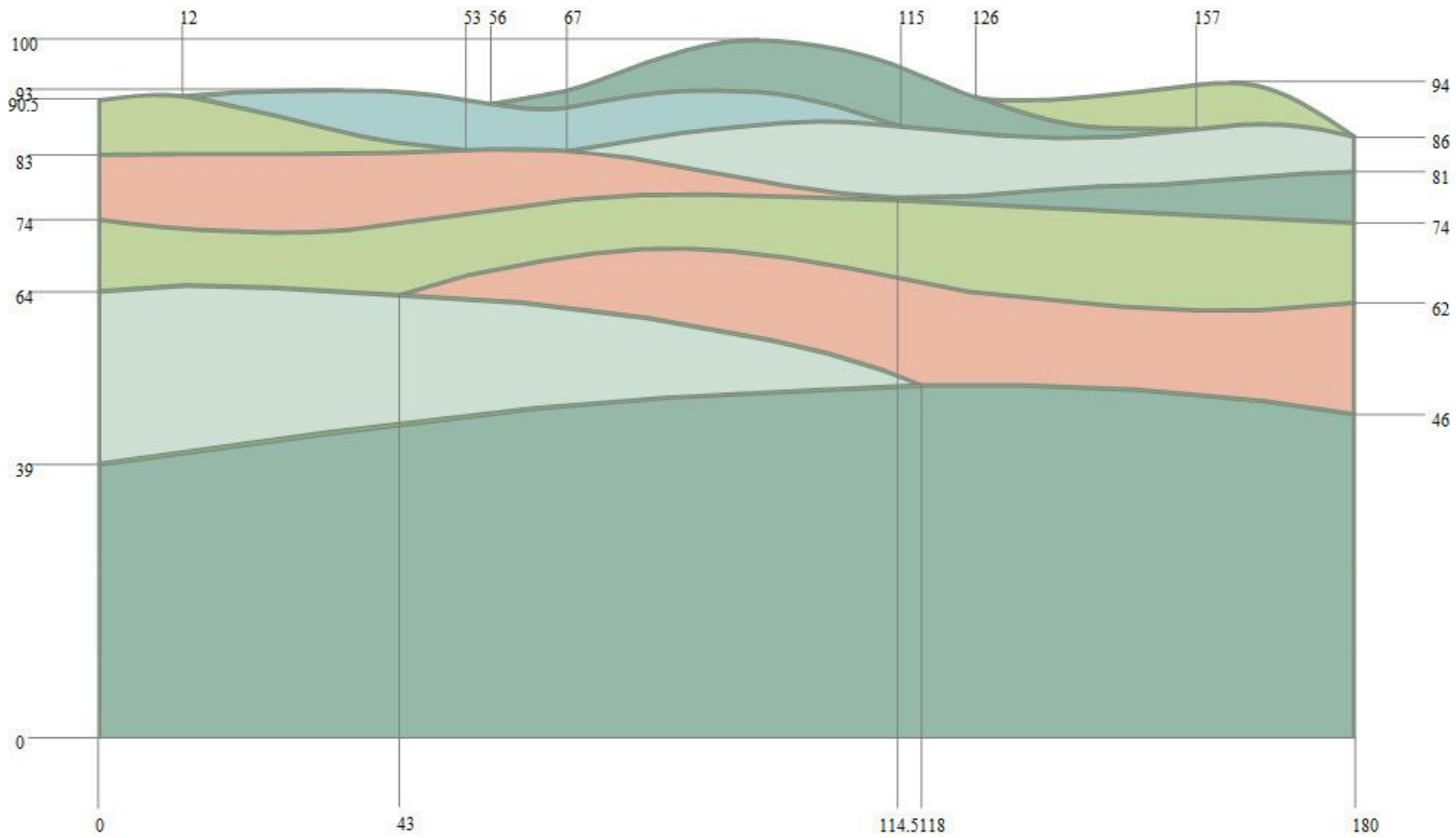


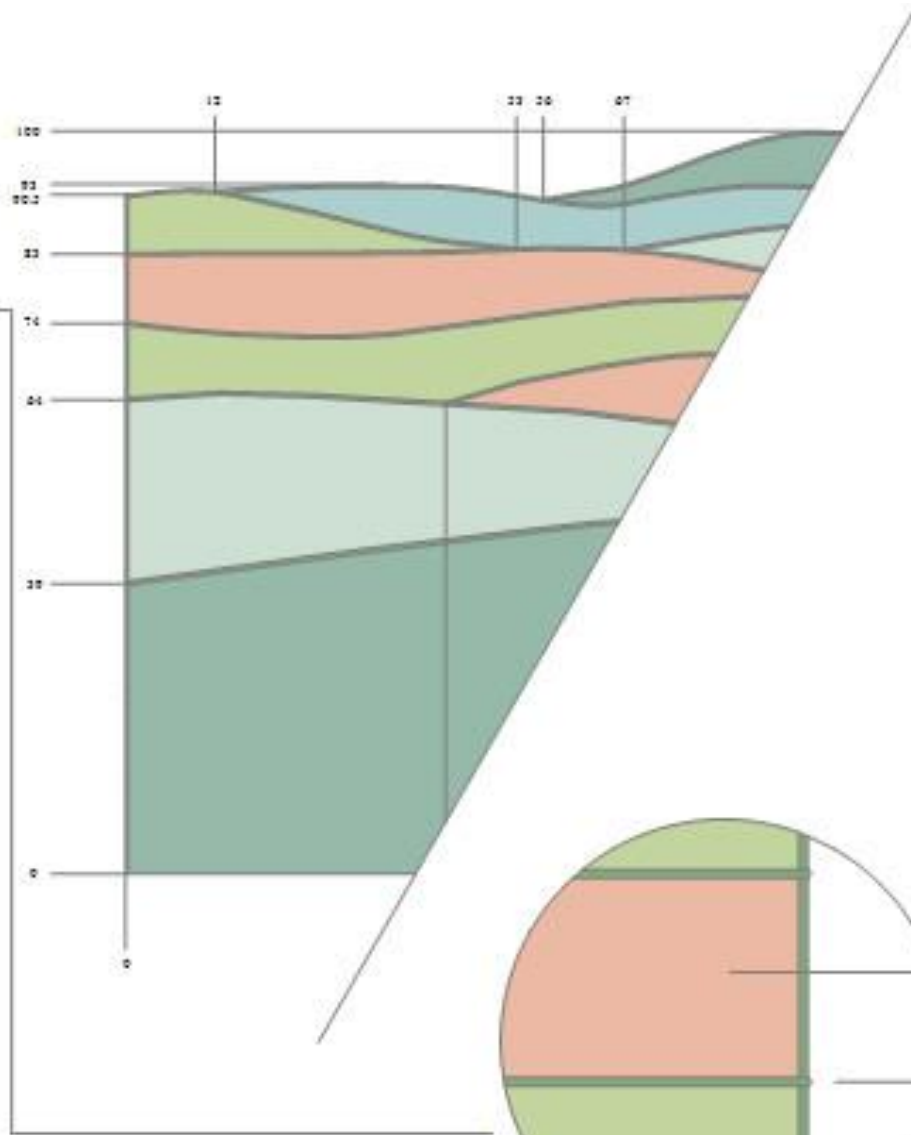


The desert was my inspiration: the continuous curves and pastel shades. I first tried to use the natural colours, but it was too evident. So I choose for a different colour scheme and more contrasts.



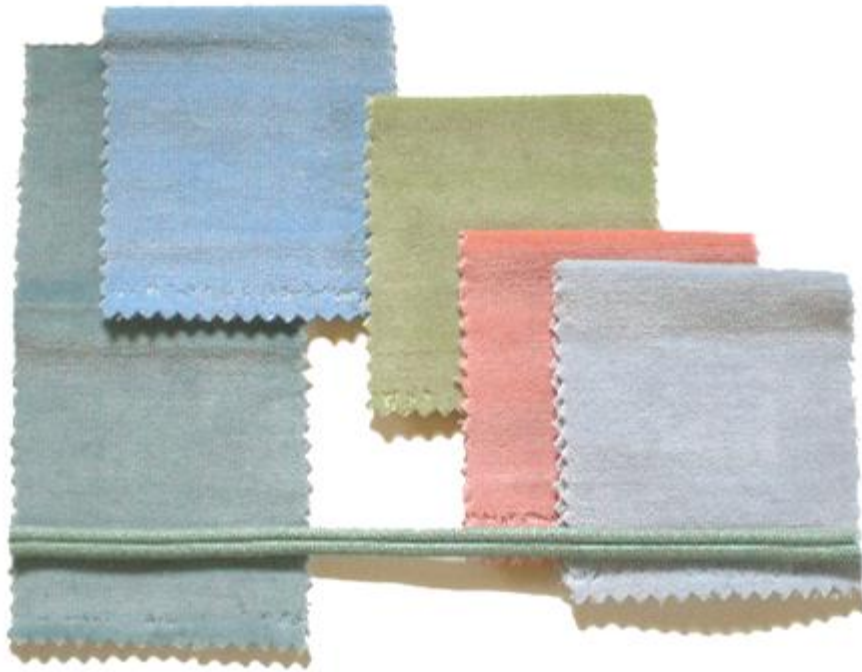


Site



Upholstery

Border



Supplier: Vriesco International Fabrics  
SECC

Name: Century

Colours:

Petrol: 5169

Soft Blue: 5070

Soft Green: 6655

Saumon: 2090

Silver grey: 5072

Upholster of velour fabric in soft dimmed colours. Border between the different parts and the outline.  
The border/rim is made in special order by local supplier.